

City of Prescott

City Council - Study Session



September 23, 2025 | 1:00 PM
201 N Montezuma Street
City Council Chambers, 1st Floor
Prescott, AZ 86301

AGENDA

The following Agenda will be considered by the **Prescott City Council** at its **Study Session** pursuant to the Prescott City Charter, Article II, Section 13. Notice of the meeting is given pursuant to Arizona Revised Statutes, Section 38-431.02. One or more members of the Council may be attending the meeting through the use of a technological device.

Viewing & Participation

This meeting may be viewed on Channel 64, Facebook Live or on the City's website: [City of Prescott Live Meeting Feed](#)

Public comments for Council may be submitted through the City website: [Public Comment Form](#)

1. **CALL TO ORDER**
2. **ROLL CALL**
3. **DISCUSSION**
 - A. Presentation & Discussion Regarding a Proposal to Convert Ken Lindley Field to Synthetic Turf.
 - B. Presentation & Discussion Regarding a Possible Shift of the Primary Runway at Prescott Regional Airport - Ernest A. Love Field.
4. **ADJOURNMENT**

Upon a public majority vote of a quorum of the City Council, the Council may hold an executive session, which will not be open to the public, regarding any item listed on the agenda but only for the following purposes:

- (1) Discussion or consideration of personnel matters (A.R.S. §38-431.03(A)(1));
- (2) Discussion or consideration of records exempt by law (A.R.S. §38-431.03(A)(2));
- (3) Discussion or consultation for legal advice with the city's attorneys (A.R.S. §38-431.03(A)(3));
- (4) Discussion or consultation with the city's attorneys regarding the city's position regarding contracts that are the subject of negotiations, in pending or contemplated litigation, or in settlement discussions conducted in order to avoid litigation (A.R.S. § 38-431.03(A)(4));
- (5) Discussion or consultation with designated representatives of the city to consider its

position and instruct its representatives regarding negotiations with employee organizations (A.R.S. §38-431.03(A)(5));

(6) Discussion, consultation or consideration for negotiations by the city or its designated representatives with members of a tribal council, or its designated representatives, of an Indian reservation located within or adjacent to the city (A.R.S. §38-431.03(A)(6));

(7) Discussion or consultation with designated representatives of the city to consider its position and instruct its representatives regarding negotiations for the purchase, sale or lease of real property (A.R.S. §38-431.03(A)(7)).

CERTIFICATION OF POSTING OF NOTICE

The undersigned hereby certifies that a copy of the foregoing notice was duly posted at Prescott City Hall on 9/18/25 at 11:45 a.m. in accordance with the statement filed by the Prescott City Council with the City Clerk.

Sarah M. Thornhill

Sarah M. Thornhill, City Clerk



TO: MAYOR AND CITY COUNCIL
AGENDA: September 23 Study Session
DATE: September 23, 2025
DEPT: Recreation Services
ITEM #: 3.A
SUBJECT: Presentation & Discussion Regarding a Proposal to Convert Ken Lindley Field to Synthetic Turf.

ITEM SUMMARY

This item is for a presentation and discussion regarding a proposal to convert the Ken Lindley field to Synthetic Turf as part of a future lease agreement.

BACKGROUND

In August 2025, Glenn Dautolo, President of OJB FC, a Prescott-based 501(c)(3) non-profit youth soccer organization, submitted a proposal to the Recreation Services Department to convert the existing natural grass field at Ken Lindley Park to a high-quality, FIFA-rated synthetic turf field. The proposal includes:

- A **\$2.5 million donation** to the City of Prescott.
- Installation of a **synthetic turf field**, upgraded **lighting to meet FIFA standards**, and **renovation of interior restroom/locker room facilities**.
- **Naming rights**, with the field proposed to be named *Michael Pantalone Field*, similar to the existing *Michael Fann Community Skatepark* at Ken Lindley Park.
- A commitment by OJB FC to fund a **full turf replacement in approximately 10 years**, aligning with the expected useful life of the turf system.

The proposal also requests a **25-year lease agreement** with the Recreation Services Department, granting OJB FC exclusive scheduling rights to the field at no additional cost. Based on the \$2.5 million contribution, this equates to an average annual investment of approximately \$100,000 over the 25-year period.

Current Ken Lindley Field Usage (Past Two Years):

- **Soccer and Football:**
 - OJB FC
 - AYSO
 - Gridiron Football
 - Yavapai College
 - Phoenix Rising (disbanded)
 - FC AZ / RSL Royals (disbanded)
- **Other Uses:**
 - City Moonlight Movies
 - Day-use rentals (3–4 per year)

Utility Costs (Two-Year Average):

- Water: 2,579,500 gallons of potable water annually

The proposed conversion is anticipated to reduce water usage by approximately **95%**. Non-soccer activities currently held at Ken Lindley could be relocated to other City parks as needed.

FINANCIAL IMPACT

There is no fiscal impact associated with this item.

RECOMMENDED ACTION

This item is for discussion only. No formal action will be taken.

ATTACHMENTS

1. Item 3.A._City OJB FC Field Discussion Presentation
2. Item 3.A._OJB Group Presentation



**Recreation Services
Department**

OJB FC

a Prescott based

501(c)(3)

Ken Lindley Field Proposal



Agenda



Presenters

Kristy Diaz-Trahan, Recreation Services Director
Glenn Daiutolo, OJB FC President



OJB FC Background

History of OJB FC
Growth of the program
OJB FC Philosophy

OJB FC Proposal

Ken Lindley Park

- Field improvements
- Grow the game in Prescott
- Recognize legend
- Lease agreement request

Recreation Services

Ken Lindley field

- Historic usage
- Annual expenses

Next Steps

September 23, 2025

- Ordinance and Lease Agreement on Voting Meeting agenda

Glenn Presents

BUTTON TEXT

Historic Usage

2024

- OJB FC
- Phoenix Rising (disbanded)
- FC AZ/RSL Royals (disbanded)
- AYSO
- Yavapai Soccer
- Day use rentals (4)
- City Moonlight Movies

2025

- OJB FC
- Gridiron Football
- Yavapai Soccer
- Day use rental (3)
- City Moonlight Movies

Displacement Solution

- OJB FC will not need other parks, freeing up for other organizations
- Alternative park for day use rental
- Alternative location for Moonlight Movies

Ken Lindley field expenses

Total Utility Use/Costs

Water

- 2023 2,547,800 gallons / \$23,546
- 2024 2,611,200 gallons / \$25,409
- 2025 1,983,627 gallons / \$18,214 (as of Aug 14)

Electrical (lighting)

Annual average \$1,800

Total Maintenance Expense

Operations & Maintenance

- \$15,500

Labor

- \$35,000

Anticipated annual savings

- \$41,778 expenses
- 2,00,000 gallons of water



Questions



Presented to:

City of Prescott Council Study Session

SEPTEMBER 23, 2025, at 2:00 PM

City of Prescott Council Study Session

September 23, 2025, 2:00 PM

Good afternoon, Council Members.

My name is Glenn Daiutolo. My wife, Shari and I are residents of Prescott, and I am also the President of OJB FC, a **Prescott based 501(c)(3) non-profit youth soccer organization.**

We would like to thank you for allowing us this time to present our proposal to fund the construction of a **“one-of-a-kind” FIFA-quality synthetic soccer field** at this City Council Study Session.

***OJB FC’s PROPOSED DONATION WOULD
MORE THAN TRIPLE THE AMOUNT OF USAGE
ON AN UNPRECEDENTED FIFA-QUALITY SYNTHETIC SOCCER FIELD
AND AT NO COST TO THE CITY OF PRESCOTT!***

OJB FC PRESENTATION AGENDA

I would like to take 10 minutes to -

1. Provide a brief background on OJB FC **(4 mins)**
2. Present OJB FC's proposal to the Council **(2 mins)**
3. Present the three requests OJB FC has for the Council **(2 mins)**
4. Provide a visual overview of what the project would look like **(2 mins)**

**Please stop me at any time during my presentation
for questions or clarifications.**



***“DIFFERENT
BY DESIGN !”***

**OJB FC is a Prescott, Arizona based
501(c)(3) Non-Profit Youth Soccer Club Est. January 2021
However, its Founder Has Been Involved in
Arizona Youth Soccer since 1991**



O Jogo Bonito embodies "The Beautiful Game!", representing a state of mind and a higher calling in soccer. It showcases the fullest expression of the sport, where players exude confidence, fearlessness, and technical mastery while maintaining control over the ball and their opponents. OJB FC Youth Soccer offers this enriching experience to the youth community in Northern Arizona.



OJB FC'S OBJECTIVES

Affordability and Accessibility

OJB FC is committed to providing the highest-quality training at the most affordable cost through private and corporate donors **mitigating the onerous American sports “pay-to-play” model.**

No child has ever been turned away from OJB FC due to cost or playing ability!

Creating a litany of opportunities for our local kids!

Holistic Player Development

The club focuses on mentoring players to be their “best selves” through sport and academics regardless of level of play. **OJB FC has assisted many players gain entrance into college even though they did not play collegiate soccer.**

Community and Culture Building

OJB FC strives to create a true “*local soccer culture*” with plans for training fields as a “*home away from home*” for the families much like international soccer clubs with local pride.

OJB FC'S OBJECTIVES

Competitive Excellence with a *“David vs. Goliath Mentality”*

Regardless of Playing Level

Even though OJB FC is based in a “small town”, OJB FC instills confidence to compete against top Arizona and U.S. teams.

OJB FC Slogan: *“Different by Design”*

OJB FC aims to revolutionize American youth soccer player development by focusing on playing *“The Beautiful Game”* with an intelligent, creative, attacking, technical, and possession-based style inspired by Spanish and South American soccer, particularly Brazilian flair.

Sophisticated and Innovative Training Curriculum

The club implements a **sophisticated and unique curriculum** combining Spanish (APFC, Bernat Franquesa) and South American methodologies, emphasizing the development of anticipation, perception, technical speed, and speed of thought while avoiding rote exercises.

OJB FC'S EXISTING PROGRAMS

OJB FC's Programs are Fully Integrated: Youth Teams - Semi-Professional Teams - Local College Teams:

Recreation (ages 4 – 13): purely recreational but with sophisticated curricula

Development (ages 4 – 13): slightly more competitive but with sophisticated curricula

Academy (4v4 and 7v7 teams only): Competitive but limited travel

Competitive (9v9 and 11v11 teams only): Competitive with travel

UPSL Youth Academy (ages 11 – 16; U13, U15, U17 teams): Run by top semi-professional league

OJB FC is the only club in Northern Arizona offering this program

Ladies' and Men's UPSL Semi-professional Teams (16 – adults)

OJB FC is the only club in Northern Arizona offering this program

Affiliation with Yavapai College through OJB FC's Sporting Director, Giorgi Manzula, Women's Doc, Rozie DeWeese, and Men's DOC, Niko Pino, who are Head Coaches or Assistant Coaches at Yavapai College

OJB FC Programs in Process

TOPSoccer (special needs), OJB FC is one of only 4 Arizona clubs approved for a special needs program (there are currently 750 special needs students in the Quad Cities with very few activities)

Semi-Professional USL2 teams for men and women (summer league for very talented local players over 16 years of age and for college players; professional prep league), requires a FIFA-quality field



2021: OJB FC was established and OJB FC with only three teams. UPSL Semi-Professional Men's team only had 8 players

Apr 2022: Giorgi Manzula hired as Director of Coaching; this was OJB FC's turning point!

2023/2024 Season: OJB FC jumps to 134 total players registered with 8 teams. UPSL Semi-Professional Men's team registers 25 players.

May 2025: Inaugural Arizona UPSL Academy Season with our 15U and 17U Boys.

May 2025: Estimating 342 competitive players at tryouts. Formation of 22 to 25 teams, totaling 307 competitive youth players. 35 Semi-Professional Men's UPSL players.

- Aug 2025:** Two exciting new launches-
- "JOGO Juniors" recreational program with an estimated player registration of 150.
 - Women's Semi-Professional UPSL team with over 30 players attending tryouts

OJB FC EXPLOSIVE GROWTH TIMELINE

UNPRECEDENTED 217% INCREASE YEAR OVER YEAR! (130 to 413 players)

OJB FC IS NOW THE LARGEST COMPETITIVE YOUTH SOCCER CLUB IN THE QUAD CITIES

INTERNATIONAL EXPOSURE

APFC, BERNAT FRANQUESA

01

Emphasis on Technical Mastery

Developing athletes' individual skills while emphasizing technical prowess.

02

Cutting-Edge Training Approaches

Integration of world-renowned Spanish and South American methodologies that are committed to modern a traditional training techniques that prioritize skill development and tactical awareness.

03

Learning from the Legends

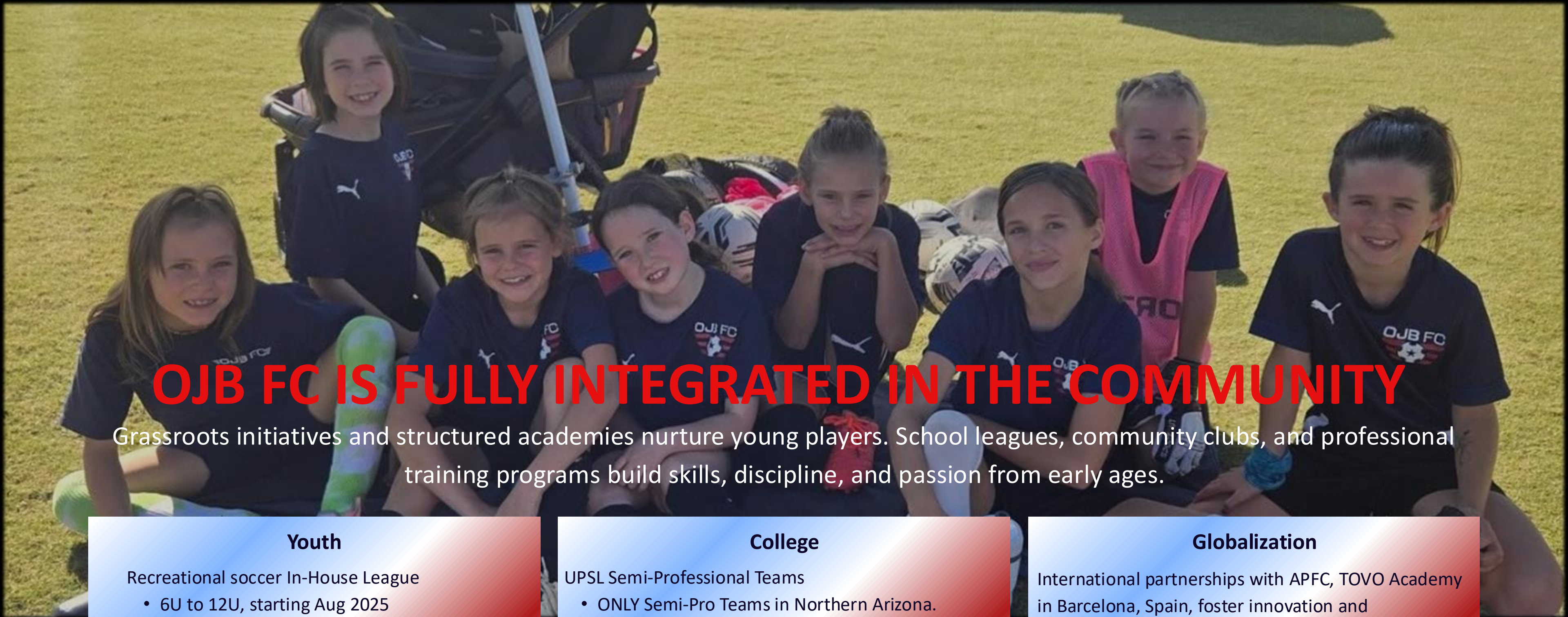
Albert Puig, Bernat Franquesa, Johan Cruyff, and Todd Beane highlight a dedication to learning from the best in the field, which is a hallmark of elite soccer training.

04

Resilience in Competition

Emphasizing the competitive spirit reflects the drive often seen in Spanish soccer, where smaller clubs challenge larger teams, fostering resilience and determination.





OJB FC IS FULLY INTEGRATED IN THE COMMUNITY

Grassroots initiatives and structured academies nurture young players. School leagues, community clubs, and professional training programs build skills, discipline, and passion from early ages.

Youth

Recreational soccer In-House League

- 6U to 12U, starting Aug 2025

Youth Competitive Teams

- 8U thru 19U

UPSL Youth Academy Teams

- 13U, 15U, 17U

College

UPSL Semi-Professional Teams

- ONLY Semi-Pro Teams in Northern Arizona.

Yavapai College “Affiliation”

- Giorgi Manzula Men’s Head Coach
 - > OJB FC Sporting Director
- Rozie DeWeese Women’s Head Coach
 - > OJB FC Women’s Director of Coaches

Globalization

International partnerships with APFC, TOVO Academy in Barcelona, Spain, foster innovation and collaboration in youth development programs that prepare them for international competition.

Future

TopSoccer a state-approved special needs program and one of only four clubs sanctioned by the state.

OJB FC ACHIEVEMENTS



*“Quality without results is pointless!
Results without quality is boring!”*

- Johan Cruyff

The European Player of the Century

01

18 Players
In college soccer programs.

02

3 Players
Selected by world-renowned FC Barcelona’s Barca Residency Academy overseen by FC Barcelona, Spain.

03

1 Player
Signed a professional contract with FC Monterey (Liga MX, Mexico).

04

UPSL Semi-Professional Men’s Team
Finished 1st in the Regular Spring 2025 Season.

05

Numerous Former Players
Went on to college and pursued academic degrees.

**OJB FC’S GOAL IS TO FIELD 60% OF PRESCOTT’S LOCAL COLLEGE ROSTERS
WITH ITS PLAYERS WITHIN 5 YEARS,
CREATE OPPORTUNITIES FOR OUR LOCAL KIDS !**

OJB FC PROPOSAL & COMMENTS



OJB FC PROPOSAL & COMMENTS

- **OJB FC proposes to contribute up to \$2.5M for the construction of a FIFA-quality synthetic soccer-only field at Ken Lindley Park, and the “cosmetic” refurbishment of the common areas**

**OJB FC COMMITS TO RESURFACING THE SYNTHETIC FIELD IN 10 TO 12 YEARS
CITY WOULD NOT HAVE ANY “OBLIGATION” TO THE FIELD FOR 20-PLUS YEARS**

KEY BENEFITS OF SYNTHETIC FIELDS

- **Much less in maintenance costs, significant water conservation, playable year-round surface (no resting period required)**
- **By converting a natural grass field to a synthetic field, Prescott could increase usage by 2 to 3 times, or 100-200%, per industry estimated**
- **A synthetic field can support 2,000 to 3,000 hours of play per year. Natural grass support 500 to 800 hours and cannot be played on during inclement weather**

This would be a one-of-a-kind FIFA quality field in Northern Arizona

OJB FC HAS ONLY 3 REQUESTS FOR ITS DONATION

- **OJB FC is seeking a 25-YEAR “PREPAID RENT” LEASE AGREEMENT** with the City of Prescott in exchange for its \$2.5M upgrade to Ken Lindley Park. Meaning, OJB FC’S capital improvement donation will be in lieu of rent over the term of the Lease

NOTE: OJB FC’S DONATION WOULD BE EQUIVALENT TO \$100,000 PER YEAR OVER THE 25-YEAR PERIOD

- OJB FC requests a **Right of First Refusal** for soccer usage prior to public use
- **FIELD NAMING RIGHTS:** Stadium remains The Ken Lindley Park but OJB FC requests naming the field, ***“The Michael Pantalone Field”***, recognizing all the incredible notoriety Mr. Pantalone brought to the City of Prescott with his stellar Hall of Fame coaching career at Yavapai College, and his unprecedented 7 National Collegiate Soccer tited!

Much like the “Michael Fann Community Skatepark” at Ken Lindley Park

OJB FC TIMELINE FOR COMPLETION

OJB FC'S Goal would be to

have the field up and running by June 11, 2026

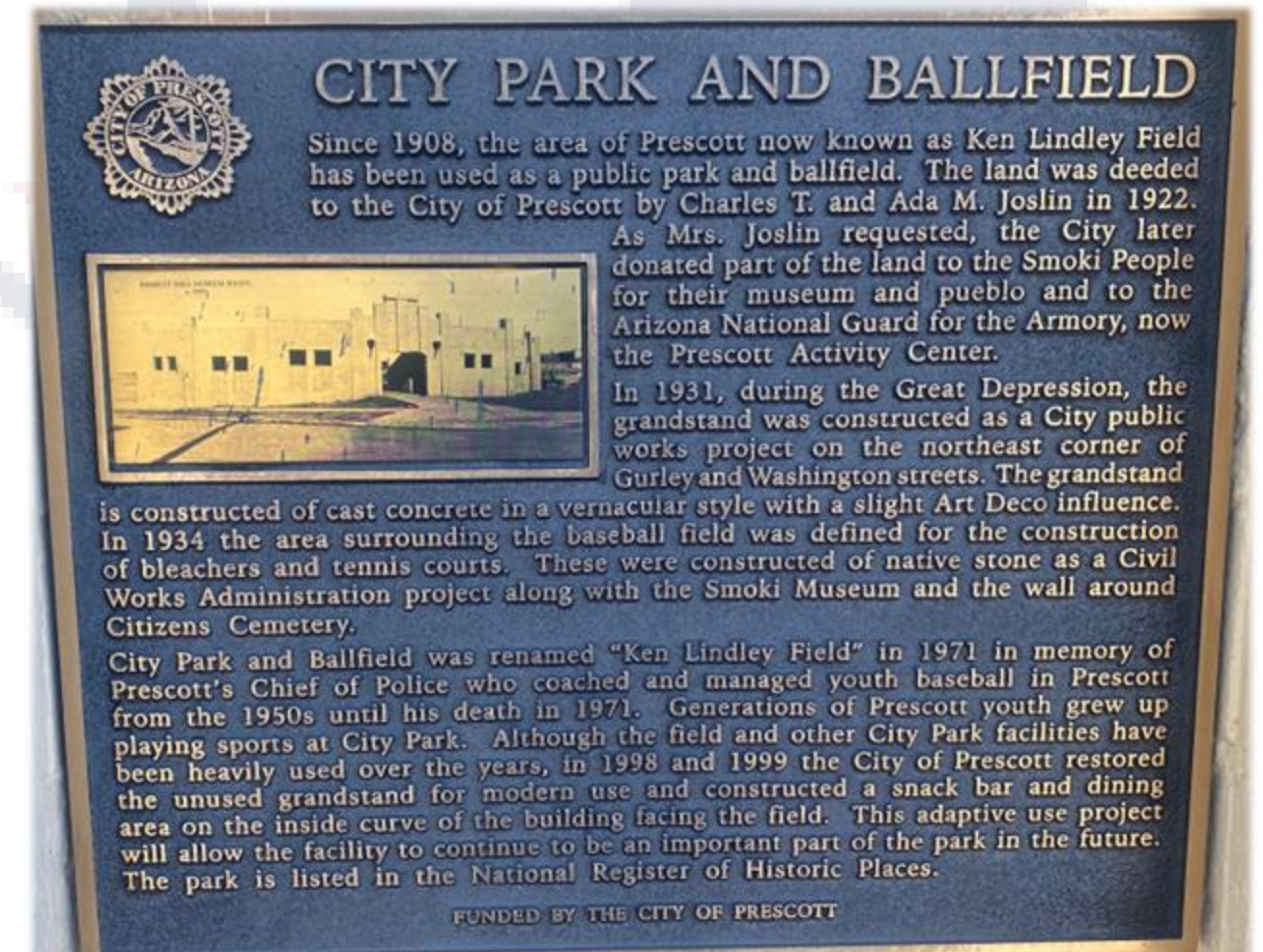
the commencement of

the 2026 World Cup hosted in North America!!!

***THIS TIMELINE COULD BE MET,
BUT WE WOULD HAVE TO MOVE QUICKLY!***

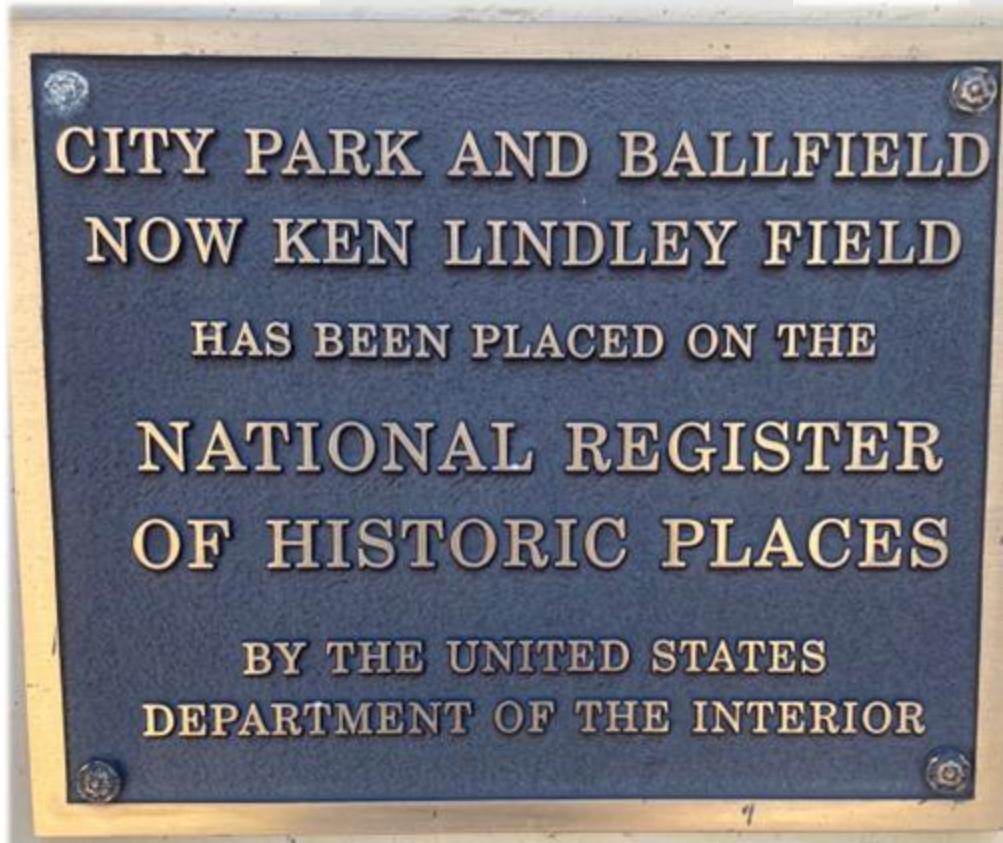
IMPORTANT

CURRENT PLAQUES AND SIGNS AT KEN LINDLEY PARK WILL REMAIN

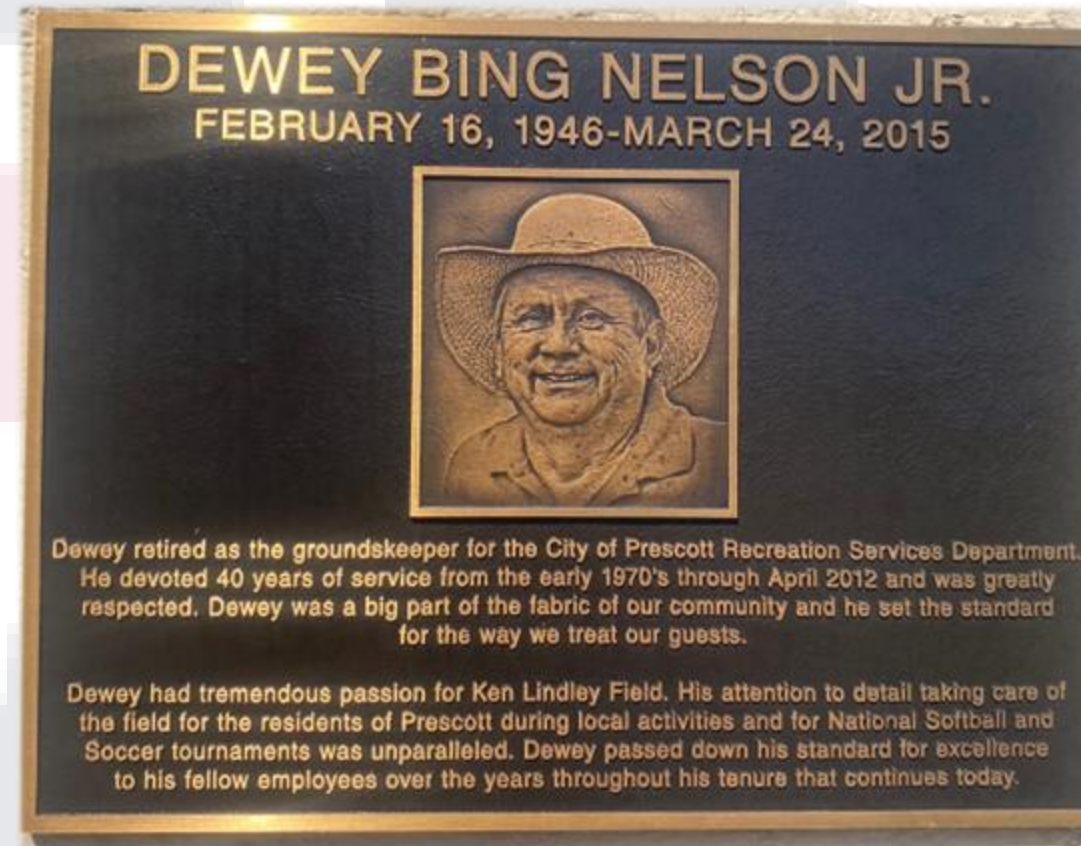


IMPORTANT

CURRENT PLAQUES AND SIGNS AT KEN LINDLEY PARK WILL REMAIN



NATIONAL REGISTER OF HISTORIC PLACES



DEWEY BING NELSON, JR



MICHAEL FANN COMMUNITY SKATEPARK

BENEFITS OF A FIFA-QUALITY SYNTHETIC FIELD

Economic and Tourism Boost for Prescott

The field could draw regional and national soccer events, increasing tourism and local business revenue (hotels, restaurants, etc.) in Prescott's population of ~46,744. This would position Prescott as a soccer hub, supporting OJB FC's vision of building a true soccer culture in a small town.

Long-Term Infrastructure Asset for the City of Prescott at NO COST to the City, and Limited Maintenance Costs for over 20 Years

A FIFA-quality synthetic field would be a durable, low-maintenance field to ensure long-term benefits for the club and community while lowering maintenance costs significantly for the City of Prescott.

Strengthened Community Partnerships

Donating the field would enhance OJB FC's partnerships with the City of Prescott and local schools, fostering goodwill and potential collaborations (e.g., hosting school events or community activities like the OJB FC Annual Family Picnic). This aligns with the club's commitment to affordability and community engagement through private and corporate donor support.

It may also encourage other Prescott resident to donate funds for future facilities in Prescott.

City of Prescott, Yavapai College, and OJB FC Identity & Culture

This synthetic field will serve as a visible example of OJB FC's commitment not just to having teams, but to building a culture of soccer in Prescott, with methodology, education, and community pride at its core.

BENEFITS OF A FIFA-QUALITY SYNTHETIC FIELD

Player Development

The synthetic field guarantees a consistent environment where OJB FC coaches can apply the APFC methodology with quality, repetition, and progression raising the standard of both training and play. Methodology isn't only about drills; it's about building a style of play and identity. A guaranteed playing surface helps players experience positional play, ball circulation, and high-repetition technical work, giving them a competitive advantage. Consequently, Prescott players will improve immensely.

Coaching Development

A central facility makes OJB FC more appealing to coaches who want to grow. The field becomes not just a place for players but also a hub for professional development, mentorship, and learning exchanges.

REMINDER: Without good teachers, we cannot have good students!

Referee Development

Much needed referee courses and clinics to increase the referee knowledge and pool of referees. This is a sorely missing part of American soccer.

Hosting & Attraction

An attractive facility will invite quality programs and clubs to Prescott, making it possible to host tournaments and high-level friendlies and games. This will bring not only sporting benefits, but also economic and cultural value to the community.

OJJB FFC

SUPPORTING EXHIBITS



YOUTH SOCCER HAS BEEN THE 2ND FASTEST GROWING SPORT

Sport	Participation Growth/Decline (2010-2020)	Approximate % Change	Notes
Youth Soccer	Strong growth	+15%	Soccer continues to grow, especially among younger age groups (6-12).
Youth Baseball	Decline	-3%	Participation has decreased slightly, especially among younger children.
Youth Softball	Stable	+1%	Softball remains relatively stable but has not seen the same growth as soccer.
Youth Basketball	Steady growth	+4-5%	Growth is steady, particularly in youth leagues and middle school programs.
Youth Football	Decline	-9%	Significant decline, particularly due to safety concerns (concussions, injuries).
Youth Tennis	Slight growth	+2-3%	Growth is modest, often tied to regional popularity and accessibility.
Youth Swimming	Steady growth	+3-4%	Swimming has seen consistent growth, especially in regions with warm climates.
Youth Volleyball	Moderate growth	+7-8%	Volleyball has experienced growth, especially among girls, and in school programs.
Youth Lacrosse	Rapid growth	+30%	Lacrosse has seen a significant rise, particularly in the Northeast and Mid-Atlantic.

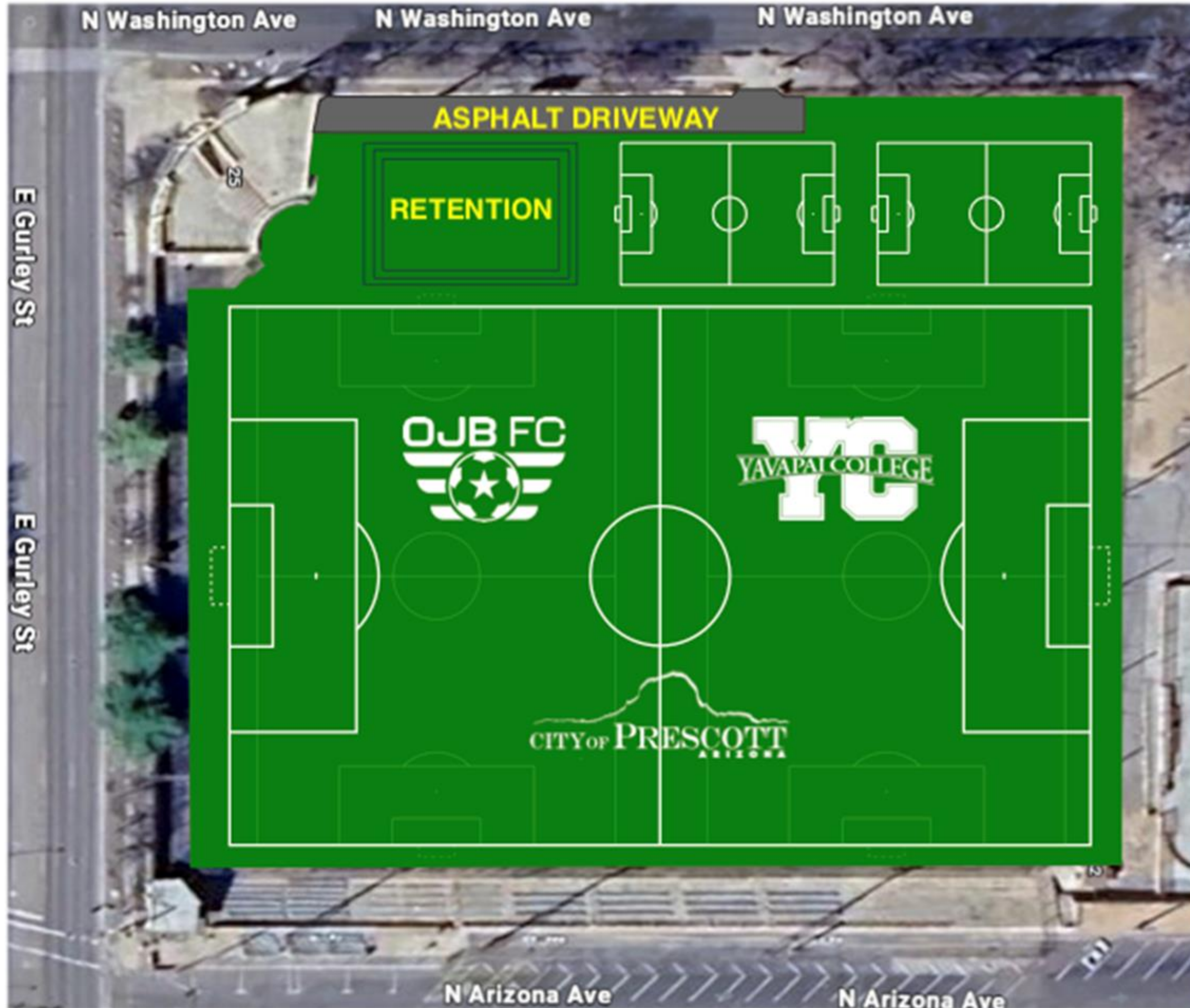
YOUTH SOCCER HAS BEEN THE 2ND FASTEST GROWING SPORT

National Youth Sports Growth Comparison (2010-2020)

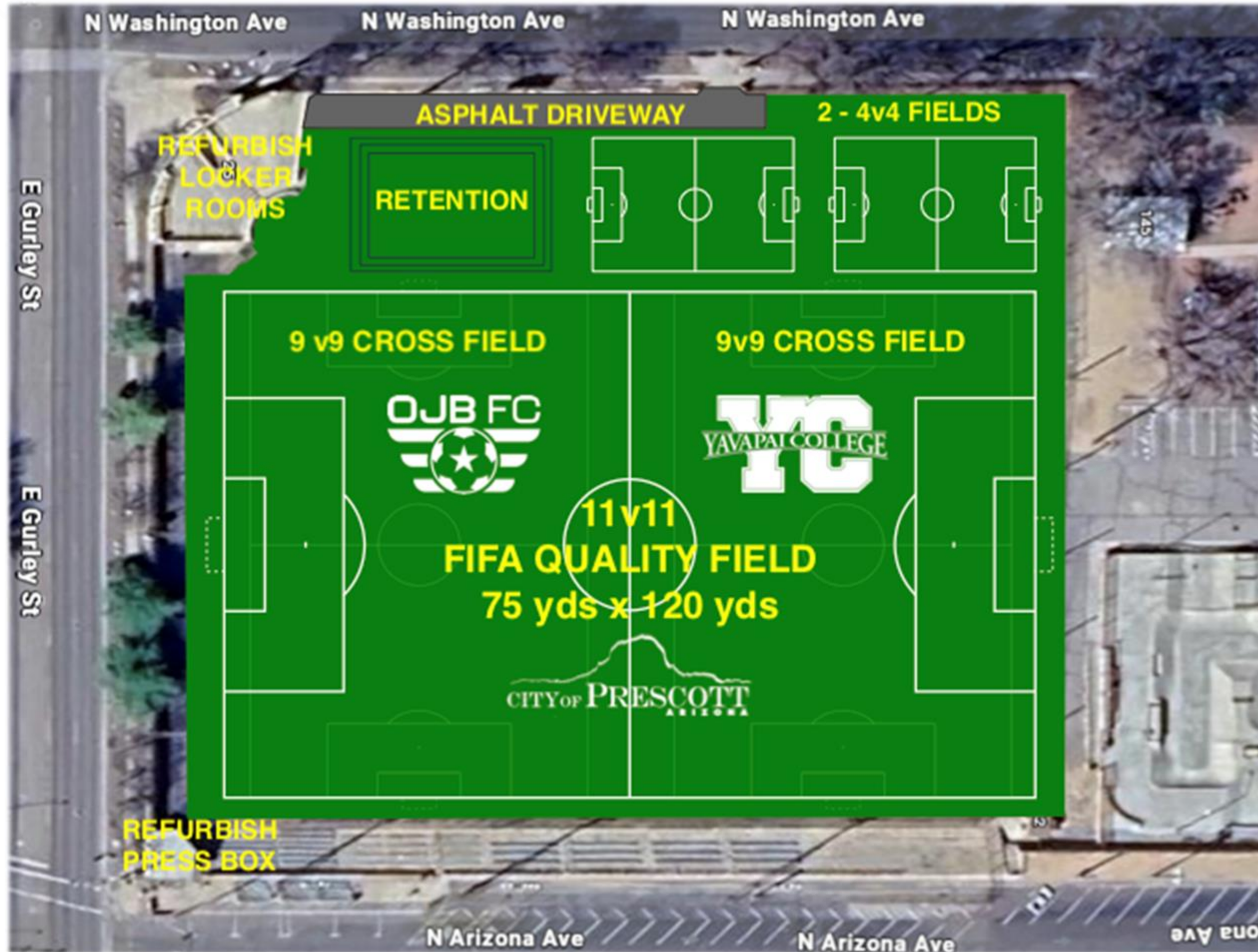
Key Insights:

- 1.Soccer:** Youth soccer has been one of the strongest growth sports in the U.S. over the past decade, driven by both increased popularity and the growth of competitive leagues. It appeals to a broad demographic, with many families seeing it as a safer alternative to football.
- 2.Football:** Youth football's decline is the most notable, with concerns about concussions and long-term health risks driving parents toward other sports. This trend is also linked to the rise of other, safer alternatives like soccer.
- 3.Baseball/Softball:** Both baseball and softball have faced slow declines or stagnation, especially in younger age groups. However, they remain deeply embedded in American sports culture.
- 4.Lacrosse:** A fast-growing sport, particularly in regions with strong high school and college programs. Lacrosse has attracted many athletes who previously played football or soccer.
- 5.Basketball:** While growth has been steady, basketball still ranks highly in terms of participation and is often a go-to sport for both boys and girls across various age groups.
- 6.Volleyball:** Growth in youth volleyball, especially for girls, has been notable, driven by school programs and club participation.

SIMPLE RENDERING OF FUTURE KEN LINDLEY PARK



MORE DETAILED RENDERING OF FUTURE KEN LINDLEY PARK



EXAMPLE OF WHAT KEN LINDLEY PARK COULD LOOK LIKE “POST-RENOVATION”

A HISTORIC, QUAIN, INFILL STADIUM



IMPORTANT

MUSCO PINPOINT ACCURATE LED LIGHTING



THANK YOU FOR YOUR TIME AND CONSIDERATION!



Call Us
(928) 405-2594



Visit Us
www.ojbfc.com



Email Us
ojbfc10@gmail.com



TO: MAYOR AND CITY COUNCIL
AGENDA: September 23 Study Session
DATE: September 23, 2025
DEPT: Airport
ITEM #: 3.B
SUBJECT: Presentation & Discussion Regarding a Possible Shift of the Primary Runway at Prescott Regional Airport - Ernest A. Love Field.

ITEM SUMMARY

This item is a discussion of the potential shift to the northeast, of the Primary Runway at Prescott Regional Airport — Ernest A. Love Field.

The airport held a two-day open house over the summer, on Wednesday, June 25th and Thursday, June 26th, where airport consultants shared with the public some of the merits of shifting its primary runway, Runway 3R-21L, at the same time as a runway extension and strengthening is planned to take place. Merits for shifting Runway 3R-21L include a corresponding shift of the one-engine inoperative (OEI) splay to the northeast, which is currently impacted by rising terrain, and avoiding potential penetration of the splay by entitled development south of the airport. Additional merits include the ability to develop an end-around-taxiway (EAT) at the south end in the future, and the corresponding shift of the runway protection zone (RPZ) to the northeast, which will keep the vast majority of this safety zone on airport property. Informational handouts highlighting project details and answers to frequently asked questions were distributed at the open houses as well.

61 citizens attended the open house on the first night, and on the second evening there were over 40 attendees. A total of 27 comments from the attendees were collected; most comments were positive and in general support of the proposed projects. Some of the attendees were concerned about the noise, flight paths, and hours of operation, particularly regarding training aircraft. It was explained that a secondary benefit of the shift and extension is that it will move the Runway 21L departure threshold, which favors prevailing winds, by approximately six-tenths of a mile to the northeast, generally shifting noise contours as well, because aircraft would reach higher altitudes by the time they reach the homes directly off the end of the runway.

A few attendees wanted to keep the existing runway pavement in the interest of safety, and another wanted additional run-up pads to be built near runway departure ends. A few were interested in more information about public safety related to the airport and how the runway shift will affect traffic from Cutter Aviation, Embry-Riddle Aeronautical University (ERAU), North-Aire Aviation, and Monarch Hangars.

BACKGROUND

Contemplation of a relocation, or shift, of Runway 3R's threshold by seven-hundred, eighty (780) feet to the northeast, shifts the existing departure end of runway (DER) 21L and eliminates the need for an existing 380-foot displacement of the Runway 3R threshold. By relocating the DER (and threshold) seven-hundred and eighty (780) feet northeast, commercial service multi-engine aircraft operators will be able to clear one-engine inoperative (OEI) obstacle limitation surfaces (OLS) required in the published departure procedures for Runway 21L, required under Federal Aviation Regulations (FAR) Part 121/135.

FINANCIAL IMPACT

A complete analysis of the fiscal impact associated with this item is yet to be accomplished, though in general, it is believed that the shift will increase the cost of the extension and strengthening project, but save land acquisition cost, while mitigating existing OEI splay penetrations associated with homes and major electrical transmission lines.

RECOMMENDED ACTION

This item is for discussion only. No formal action will be taken.

ATTACHMENTS

1. PRC Runway Shift Presentation

PRESCOTT REGIONAL AIRPORT AIRPORT LAYOUT PLAN UPDATE

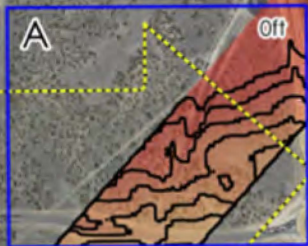
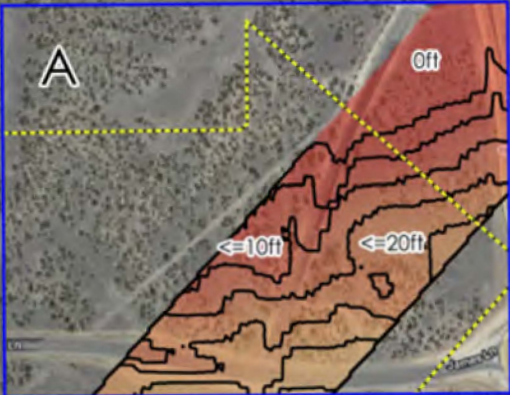
CITY COUNCIL STUDY SESSION

PREPARED BY: **DIBBLE**

Obstacle Limitation Surfaces

Maximum Height of Development

- 0ft AGL
- ≤ 10ft AGL
- ≤ 20ft AGL
- ≤ 30ft AGL
- ≤ 40ft AGL
- ≤ 50ft AGL
- Land Aquisition



No consideration of existing powerlines that run north-south near the southwestern corner of proposed land acquisition parcel



OEI Limited Heights (Existing Runway)



DESCRIPTION	LEGEND		
	EXISTING	FUTURE	ULTIMATE
AIRPORT BUILDING	[Grey Box]	[Grey Box]	[Grey Box]
AIRPORT FAVENMENT	[Grey Box]	[Grey Box]	[Grey Box]
AIRPORT PROXIMITY	[Grey Box]	[Grey Box]	[Grey Box]
AIRPORT FURNISHMENT	[Grey Box]	[Grey Box]	[Grey Box]
DEMOLITION	NA	NA	NA
GOLF COURSE	[Green Area]	[Green Area]	[Green Area]
LAND ACQUISITION	[Light Green Area]	[Light Green Area]	[Light Green Area]
RUNWAY CENTERLINE MARKING	[Blue Line]	[Blue Line]	[Blue Line]
RUNWAY VISIBILITY ZONE (RVRZ)	[Blue Area]	[Blue Area]	[Blue Area]
RUNWAY TAXILANE MARKING	[Blue Line]	[Blue Line]	[Blue Line]
RUNWAY RESTRICTION LINE (RSL)	[Blue Line]	[Blue Line]	[Blue Line]
FENCE	NA	NA	NA
FENCE PERIMETER	NA	NA	NA

DESCRIPTION	LEGEND		
	EXISTING	FUTURE	ULTIMATE
GRADE SLOPE CRITICAL AREA	[Red Area]	[Red Area]	[Red Area]
GROUND ELEVATION CONTOURS	[Blue Line]	[Blue Line]	[Blue Line]
LOCALIZER CRITICAL AREA	[Red Area]	[Red Area]	[Red Area]
OBSTACLE FREE ZONE (OFZ)	[Red Area]	[Red Area]	[Red Area]
PAV'TY APPROACH SURFACE	[Blue Line]	[Blue Line]	[Blue Line]
PRECISION OBSTACLE FREE ZONE (POFZ)	[Red Area]	[Red Area]	[Red Area]
RUNWAY OBJECT FREE AREA (ORFA)	[Red Area]	[Red Area]	[Red Area]
RUNWAY PROTECTION ZONE (RPZ) [APPROACH]	[Red Area]	[Red Area]	[Red Area]
RUNWAY PROTECTION ZONE (RPZ) [DEPARTURE]	[Red Area]	[Red Area]	[Red Area]
RUNWAY SAFETY AREA (RSA)	[Red Area]	[Red Area]	[Red Area]
TAXILANE OBJECT FREE AREA (TOFA)	[Red Area]	[Red Area]	[Red Area]
TAXILANE SAFETY AREA (TSA)	[Red Area]	[Red Area]	[Red Area]
TAXILANE OBJECT FREE AREA (TOFA)	[Red Area]	[Red Area]	[Red Area]

DESCRIPTION	LEGEND		
	EXISTING	FUTURE	ULTIMATE
TAXILANE SAFETY AREA (TSA)	[Red Area]	[Red Area]	[Red Area]
THRESHOLD BEARING SURFACE (TBS)	[Blue Line]	[Blue Line]	[Blue Line]
TORN OBSTACLE CLEARANCE SURFACE	[Red Area]	[Red Area]	[Red Area]
GRADE SLOPE QUALIFICATION SURFACE (GSQS)	[Red Area]	[Red Area]	[Red Area]
AIRPORT OBSTACLE POINT (AOP)	[Red Area]	[Red Area]	[Red Area]
AUTOMATED WEATHER OBSERVING SYSTEM (AWOS)	[Red Area]	[Red Area]	[Red Area]
MINIMUM APPROACH LIGHT SYSTEM (MALSR)	[Red Area]	[Red Area]	[Red Area]
PRECISION APPROACH PATH INDICATOR (PAPI)	[Red Area]	[Red Area]	[Red Area]
ROADWAYS APPROACH INTERSECTION	[Red Area]	[Red Area]	[Red Area]
ROTATING BEACON	[Red Area]	[Red Area]	[Red Area]
RUNWAY END IDENTIFICATION LIGHT (REIL)	[Red Area]	[Red Area]	[Red Area]
THRESHOLD LIGHTS	[Red Area]	[Red Area]	[Red Area]
WIND CONE INDICATED CIRCLE	[Red Area]	[Red Area]	[Red Area]

DEVELOPMENT PROGRAM	
PHASE I DEVELOPMENT	[Red Box]
PHASE II DEVELOPMENT	[Blue Box]
PHASE III DEVELOPMENT	[Green Box]
ULTIMATE DEVELOPMENT	[Grey Box]

NO.	REVISIONS	BY	APP.	DATE
1	PLP UPDATE	JVA	CM	
2	PLP UPDATE	VS	CM	
3	PLP UPDATE	VS	CM	



DRAFT

TERMINAL AIRPORT PLAN - SOUTH

**PRESCOTT REGIONAL AIRPORT
PRESCOTT, ARIZONA**

THIS SET OF RECORD OR ALTERNATE RECORD DRAWINGS IS THE PROPERTY OF THE CLIENT. THE USER AGREES TO DEFEND, INDEMNIFY, AND HOLD DESIGN PROFESSIONALS HARMLESS FROM ALL CLAIMS, DAMAGES, LOSSES, EXPENSES, AND ATTORNEY'S FEES ARISING OUT OF THE MODIFICATIONS OR REUSE OF THESE DRAWINGS.

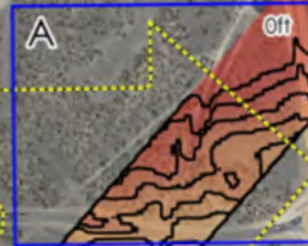
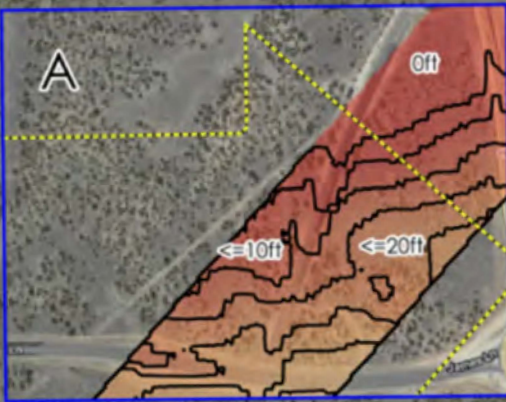
DRAWN BY: _____ SCALE: 1" = 200'
CHECKED BY: _____ DATE: JUNE 2025

SHEET
6
OF
42

Obstacle Limitation Surfaces

Maximum Height of Development

- 0ft AGL
- ≤ 10ft AGL
- ≤ 20ft AGL
- ≤ 30ft AGL
- ≤ 40ft AGL
- ≤ 50ft AGL
- Land Acquisition



No consideration of existing powerlines that run north-south near the southwestern corner of proposed land acquisition parcel

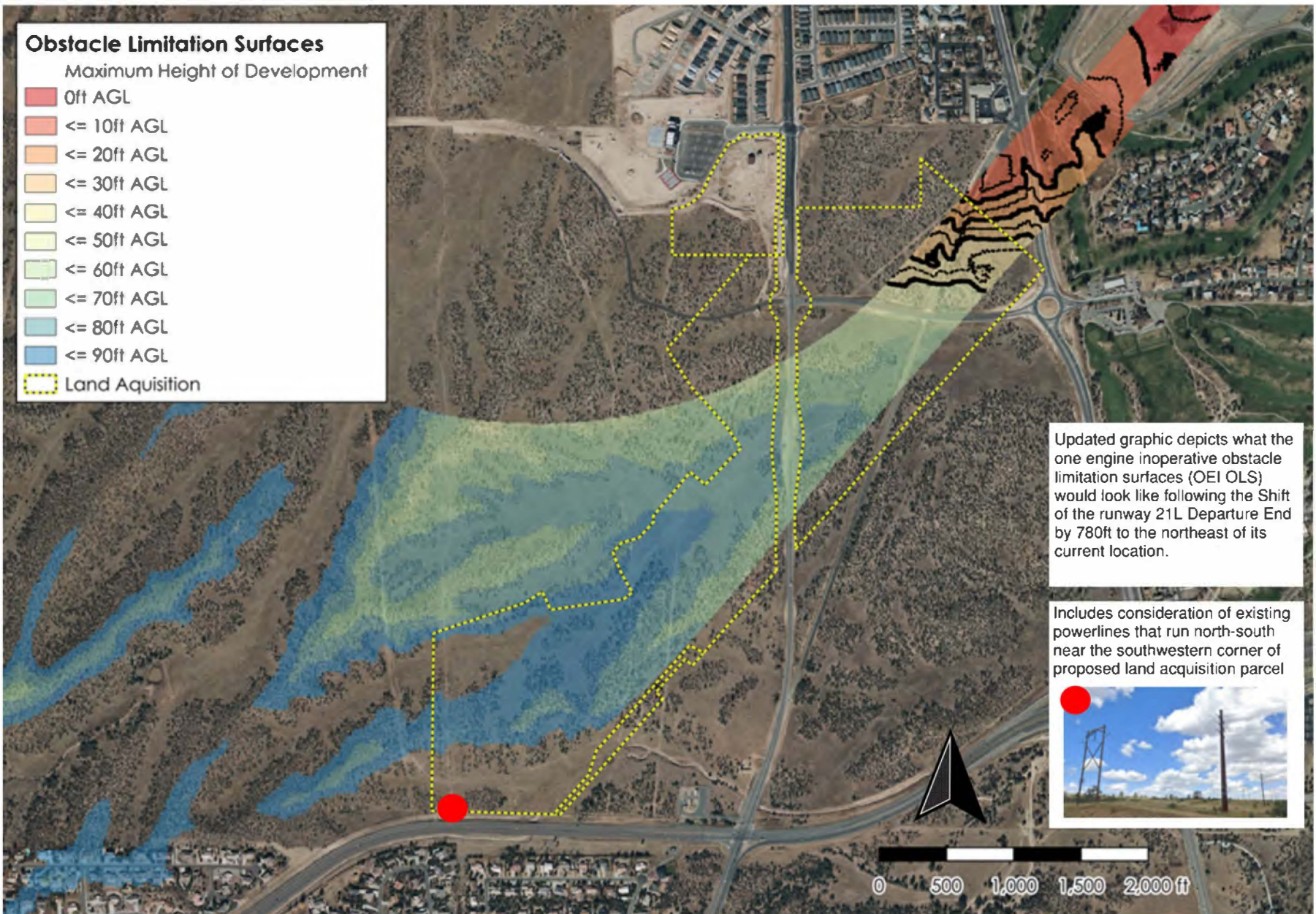


OEI Limited Heights (Existing Runway)

Obstacle Limitation Surfaces

Maximum Height of Development

- 0ft AGL
- <= 10ft AGL
- <= 20ft AGL
- <= 30ft AGL
- <= 40ft AGL
- <= 50ft AGL
- <= 60ft AGL
- <= 70ft AGL
- <= 80ft AGL
- <= 90ft AGL
- Land Aquisition



Updated graphic depicts what the one engine inoperative obstacle limitation surfaces (OEI OLS) would look like following the Shift of the runway 21L Departure End by 780ft to the northeast of its current location.

Includes consideration of existing powerlines that run north-south near the southwestern corner of proposed land acquisition parcel



OEI Limited Heights (Shifted Runway)



0 750 1,500
 Feet

DIBBLE

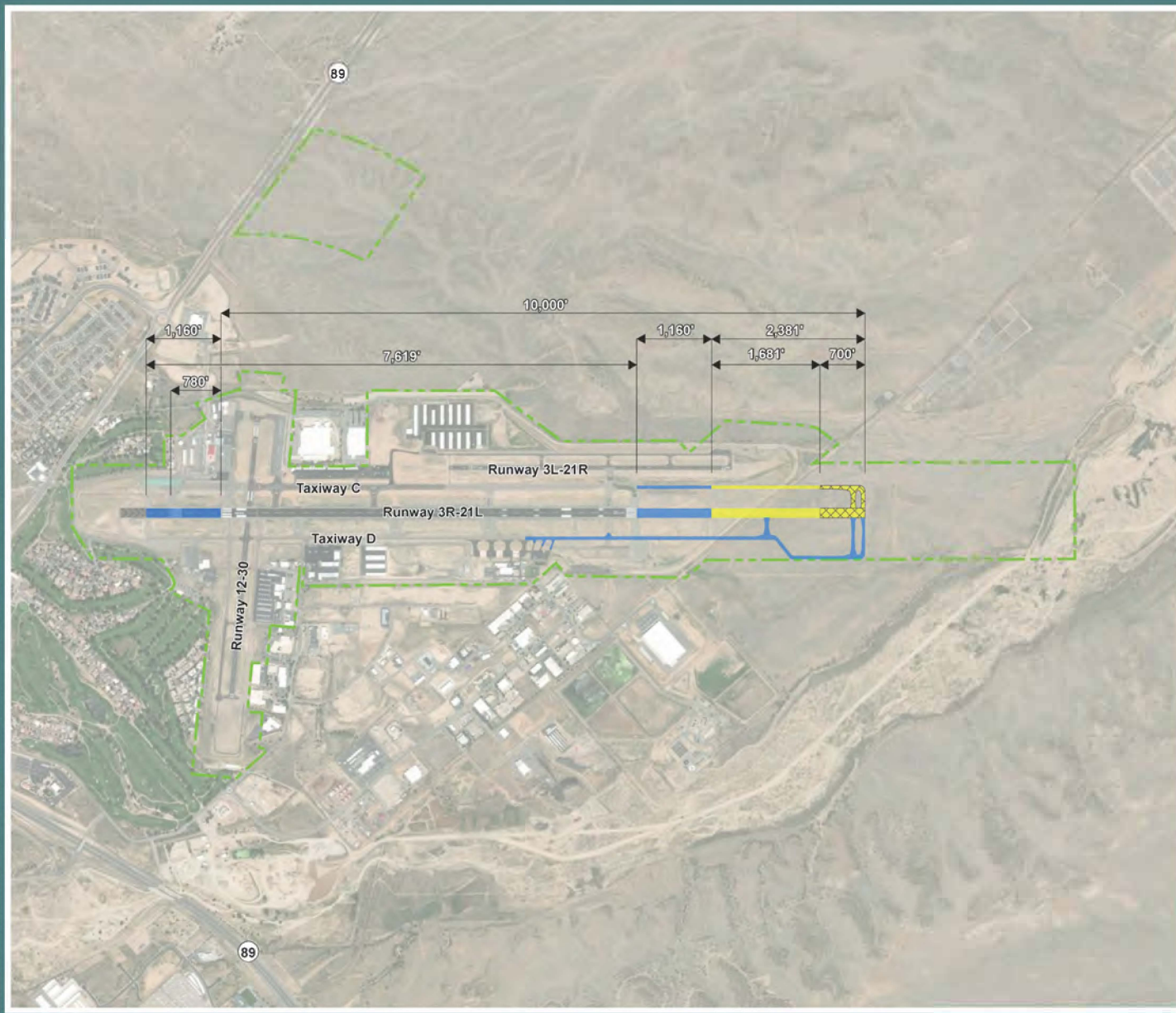
Existing Airport Property Line

Safety Related Portion

- Runway 3R-21L Shift
- Taxiway C
- Taxiway D

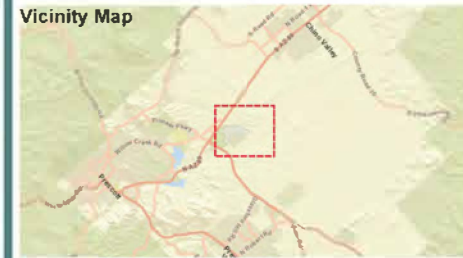
Capacity Related Portion

- Runway 3R-21L Extension - FAA Eligibility
- Runway 3R-21L Extension - ADOT Eligibility
- Taxiway C - FAA Eligibility
- Taxiway C - ADOT Eligibility



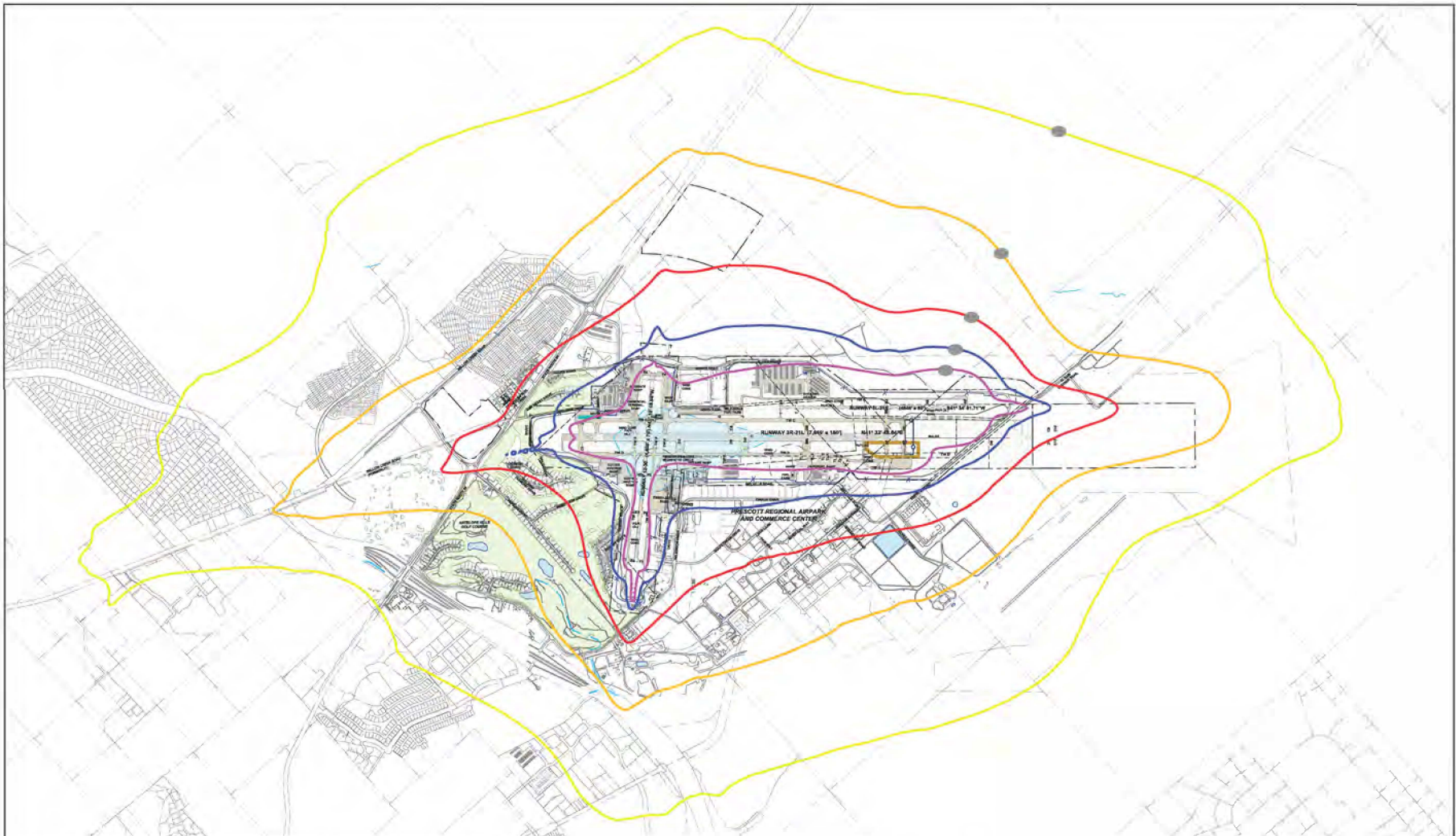
DRAFT

Vicinity Map



Runway 3R-21L - 10,000' Extension
 Date: June 2025

FILE: J:\2025\1022566_PRC - On-Call Planning - Environmental - 2025-2027\2025 FAA Meeting 1-6-25\Dibble\Information\05\PRC - RW 3R-21L Extension.mxd DATE: 6/17/2025 TIME: 1:09:43 PM



DESCRIPTION	EXISTING
AIRPORT BUILDING	—
AIRPORT FAVINANT	—
AIRPORT PROPERTY	—
GRASS COURSE	—
RUNWAY CENTERLINE MARKING	—
TAXIWAY/TRAILWAY MARKING	—
ADJACENT PROPERTY LINE	—
TOPOGRAPHY (TESTIMONY LINE ONLY)	—
SETBACK	—
FENCE	—
FENCE PERIMETER	—
CLARK SLOPE CRITICAL AREA	—

DESCRIPTION	EXISTING
1500 FT. PROTECTION AREA (PRA)	—
1000 FT. PROTECTION AREA (PRA)	—
500 FT. PROTECTION AREA (PRA)	—
250 FT. PROTECTION AREA (PRA)	—
150 FT. PROTECTION AREA (PRA)	—
75 FT. PROTECTION AREA (PRA)	—
37.5 FT. PROTECTION AREA (PRA)	—
18.75 FT. PROTECTION AREA (PRA)	—
9.375 FT. PROTECTION AREA (PRA)	—
4.6875 FT. PROTECTION AREA (PRA)	—
2.34375 FT. PROTECTION AREA (PRA)	—
1.171875 FT. PROTECTION AREA (PRA)	—
0.5859375 FT. PROTECTION AREA (PRA)	—
0.29296875 FT. PROTECTION AREA (PRA)	—
0.146484375 FT. PROTECTION AREA (PRA)	—
0.0732421875 FT. PROTECTION AREA (PRA)	—
0.03662109375 FT. PROTECTION AREA (PRA)	—
0.018310546875 FT. PROTECTION AREA (PRA)	—
0.0091552734375 FT. PROTECTION AREA (PRA)	—
0.00457763671875 FT. PROTECTION AREA (PRA)	—
0.002288818359375 FT. PROTECTION AREA (PRA)	—
0.0011444091796875 FT. PROTECTION AREA (PRA)	—
0.00057220458984375 FT. PROTECTION AREA (PRA)	—
0.000286102294921875 FT. PROTECTION AREA (PRA)	—
0.0001430511474609375 FT. PROTECTION AREA (PRA)	—
0.00007152557373046875 FT. PROTECTION AREA (PRA)	—
0.000035762786865234375 FT. PROTECTION AREA (PRA)	—
0.0000178813934326171875 FT. PROTECTION AREA (PRA)	—
0.00000894069671630859375 FT. PROTECTION AREA (PRA)	—
0.000004470348358154296875 FT. PROTECTION AREA (PRA)	—
0.0000022351741790771484375 FT. PROTECTION AREA (PRA)	—
0.00000111758708953857421875 FT. PROTECTION AREA (PRA)	—
0.000000558793544769287109375 FT. PROTECTION AREA (PRA)	—
0.000000279396772384643546875 FT. PROTECTION AREA (PRA)	—
0.0000001396983861923217734375 FT. PROTECTION AREA (PRA)	—
0.00000006984919309616088671875 FT. PROTECTION AREA (PRA)	—
0.000000034924596548080443359375 FT. PROTECTION AREA (PRA)	—
0.0000000174622982740402216796875 FT. PROTECTION AREA (PRA)	—
0.00000000873114913702011083984375 FT. PROTECTION AREA (PRA)	—
0.000000004365574568510055419621875 FT. PROTECTION AREA (PRA)	—
0.0000000021827872842550277093109375 FT. PROTECTION AREA (PRA)	—
0.00000000109139364212751385454646875 FT. PROTECTION AREA (PRA)	—
0.000000000545696821063756927273234375 FT. PROTECTION AREA (PRA)	—
0.00000000027284841053187846363671875 FT. PROTECTION AREA (PRA)	—
0.000000000136424205265939231818359375 FT. PROTECTION AREA (PRA)	—
0.0000000000682121026329696159091771875 FT. PROTECTION AREA (PRA)	—
0.00000000003410605131648480795458869375 FT. PROTECTION AREA (PRA)	—
0.000000000017053025658242403977294346875 FT. PROTECTION AREA (PRA)	—
0.000000000008526512829121201988647173234375 FT. PROTECTION AREA (PRA)	—
0.0000000000042632564145606009943235869375 FT. PROTECTION AREA (PRA)	—
0.00000000000213162820728030049716179346875 FT. PROTECTION AREA (PRA)	—
0.00000000000106581410364015024858089673234375 FT. PROTECTION AREA (PRA)	—
0.000000000000532907051820075124290448366171875 FT. PROTECTION AREA (PRA)	—
0.00000000000026645352591003756214522418308869375 FT. PROTECTION AREA (PRA)	—
0.00000000000013322676295501878107261209169346875 FT. PROTECTION AREA (PRA)	—
0.000000000000066613381477509390535306045869375 FT. PROTECTION AREA (PRA)	—
0.0000000000000333066907387545267676530229346875 FT. PROTECTION AREA (PRA)	—
0.0000000000000166533453693772633838265114673234375 FT. PROTECTION AREA (PRA)	—
0.00000000000000832667268468863169191275573171875 FT. PROTECTION AREA (PRA)	—
0.000000000000004163336342344315959561377869375 FT. PROTECTION AREA (PRA)	—
0.00000000000000208166817117215797828068869375 FT. PROTECTION AREA (PRA)	—
0.000000000000001040834085586078989140344346875 FT. PROTECTION AREA (PRA)	—
0.000000000000000520417042793039494570172171875 FT. PROTECTION AREA (PRA)	—
0.0000000000000002602085213965197472850860869375 FT. PROTECTION AREA (PRA)	—
0.00000000000000013010426069825987364254304346875 FT. PROTECTION AREA (PRA)	—
0.0000000000000000650521303491299368212717171875 FT. PROTECTION AREA (PRA)	—
0.0000000000000000325260651745649684106358869375 FT. PROTECTION AREA (PRA)	—
0.0000000000000000162630325872824842031694346875 FT. PROTECTION AREA (PRA)	—
0.000000000000000008131516293641242101547171875 FT. PROTECTION AREA (PRA)	—
0.000000000000000004065758146820621007738869375 FT. PROTECTION AREA (PRA)	—
0.000000000000000002032879073410310038694346875 FT. PROTECTION AREA (PRA)	—
0.00000000000000000101643953670515019347171875 FT. PROTECTION AREA (PRA)	—
0.000000000000000000508219768352575096738869375 FT. PROTECTION AREA (PRA)	—
0.00000000000000000025410988417628754838694346875 FT. PROTECTION AREA (PRA)	—
0.00000000000000000012705494208814377419347171875 FT. PROTECTION AREA (PRA)	—
0.00000000000000000006352747104407187096738869375 FT. PROTECTION AREA (PRA)	—
0.000000000000000000031763735522003535048694346875 FT. PROTECTION AREA (PRA)	—
0.000000000000000000015881867761001767524347171875 FT. PROTECTION AREA (PRA)	—
0.00000000000000000000794093388050088376217171875 FT. PROTECTION AREA (PRA)	—
0.0000000000000000000039704669402504418810869375 FT. PROTECTION AREA (PRA)	—
0.00000000000000000000198523347012522094404346875 FT. PROTECTION AREA (PRA)	—
0.000000000000000000000992616735062612222217171875 FT. PROTECTION AREA (PRA)	—
0.000000000000000000000496308367531306111110869375 FT. PROTECTION AREA (PRA)	—
0.0000000000000000000002481541837656530555554346875 FT. PROTECTION AREA (PRA)	—
0.0000000000000000000001240770918828265277777171875 FT. PROTECTION AREA (PRA)	—
0.000000000000000000000062038545941413263888869375 FT. PROTECTION AREA (PRA)	—
0.0000000000000000000000310192729707066319444346875 FT. PROTECTION AREA (PRA)	—
0.0000000000000000000000155096364853533159722171875 FT. PROTECTION AREA (PRA)	—
0.00000000000000000000000775481824267665798610869375 FT. PROTECTION AREA (PRA)	—
0.00000000000000000000000387740912133832899304346875 FT. PROTECTION AREA (PRA)	—
0.00000000000000000000000193870456066916449965171875 FT. PROTECTION AREA (PRA)	—
0.000000000000000000000000969352280334572499825869375 FT. PROTECTION AREA (PRA)	—
0.0000000000000000000000004846761401672862499414346875 FT. PROTECTION AREA (PRA)	—
0.0000000000000000000000002423380700836431249707171875 FT. PROTECTION AREA (PRA)	—
0.00000000000000000000000012116903504182162124885869375 FT. PROTECTION AREA (PRA)	—
0.0000000000000000000000000605845175209106112444346875 FT. PROTECTION AREA (PRA)	—
0.000000000000000000000000030292258760455306112444346875 FT. PROTECTION AREA (PRA)	—
0.00000000000000000000000001514612938022765305622171875 FT. PROTECTION AREA (PRA)	—
0.000000000000000000000000007573064690113826528110869375 FT. PROTECTION AREA (PRA)	—
0.0000000000000000000000000037865323450569126405554346875 FT. PROTECTION AREA (PRA)	—
0.0000000000000000000000000018932661725284563202777171875 FT. PROTECTION AREA (PRA)	—
0.000000000000000000000000000946633086264228160138869375 FT. PROTECTION AREA (PRA)	—
0.000000000000000000000000000473316543132114006944346875 FT. PROTECTION AREA (PRA)	—
0.000000000000000000000000000236658271561070034722171875 FT. PROTECTION AREA (PRA)	—
0.0000000000000000000000000001183291357805350173610869375 FT. PROTECTION AREA (PRA)	—
0.0000000000000000000000000000591645678902675086804346875 FT. PROTECTION AREA (PRA)	—
0.000000000000000000000000000029582283945133754344346875 FT. PROTECTION AREA (PRA)	—
0.00000000000000000000000000001479114197256687717171875 FT. PROTECTION AREA (PRA)	—
0.0000000000000000000000000000073955709862834388869375 FT. PROTECTION AREA (PRA)	—
0.00000000000000000000000000000369778549314171944346875 FT. PROTECTION AREA (PRA)	—
0.000000000000000000000000000001848892746570859722171875 FT. PROTECTION AREA (PRA)	—
0.0000000000000000000000000000009244463732854298610869375 FT. PROTECTION AREA (PRA)	—
0.000000000000000000000000000000462223186642714944346875 FT. PROTECTION AREA (PRA)	—
0.000000000000000000000000000000231111593321357247171875 FT. PROTECTION AREA (PRA)	—
0.0000000000000000000000000000001155557966606786238869375 FT. PROTECTION AREA (PRA)	—
0.000000000000000000000000000000057777898330339311944346875 FT. PROTECTION AREA (PRA)	—
0.0000000000000000000000000000000288889491651696559722171875 FT. PROTECTION AREA (PRA)	—
0.00000000000000000000000000000001444447458258482798610869375 FT. PROTECTION AREA (PRA)	—
0.000000000000000000000000000000007222237291292441944346875 FT. PROTECTION AREA (PRA)	—
0.0000000000000000000000000000000036111186456462209722171875 FT. PROTECTION AREA (PRA)	—
0.0000000000000000000000000000000018055593228231104710869375 FT. PROTECTION AREA (PRA)	—
0.0000000000000000000000000000000009027796614115554346875 FT. PROTECTION AREA (PRA)	—
0.0000000000000000000000000000000004513898307057777171875 FT. PROTECTION AREA (PRA)	—
0.00000000000000000000000000000000022569491535288869375 FT. PROTECTION AREA (PRA)	—
0.000000000000000000000000000000000112847457676444346875 FT. PROTECTION AREA (PRA)	—
0.000000000000000000000000000000000056423728838222171875 FT. PROTECTION AREA (PRA)	—
0.000000000000000000000000000000000028211864419110869375 FT. PROTECTION AREA (PRA)	—
0.0000000000000000000000000000000000141059322095554346875 FT. PROTECTION AREA (PRA)	—
0.000000000000000000000000000000000007052966104777171875 FT. PROTECTION AREA (PRA)	—
0.00000000000000000000000000000000000352648305238869375 FT. PROTECTION AREA (PRA)	—
0.0000000000000000000000000000000000017632415261944346875 FT. PROTECTION AREA (PRA)	—
0.00000000000000000000000000000000000088162076309722171875 FT. PROTECTION AREA (PRA)	—
0.000000000000000000000000000000000000440810381548610869375 FT. PROTECTION AREA (PRA)	—
0.0000000000000000000000000000000000002204051907744346875 FT. PROTECTION AREA (PRA)	—
0.00000000000000000000000000000000000011020259538722171875 FT. PROTECTION AREA (PRA)	—
0.000000000000000000000000000000000000055101297693610869375 FT. PROTECTION AREA (PRA)	—
0.000000000000000000000000000000000000027550648846804346875 FT. PROTECTION AREA (PRA)	—
0.00000000000000000000000000000000000001377532442344346875 FT. PROTECTION AREA (PRA)	—
0.0000000000000000000000000000000000000068876622117171875 FT. PROTECTION AREA (PRA)	—
0.0000000000000000000000000000000000000034438311058610869375 FT. PROTECTION AREA (PRA)	—
0.0000000000000000000000000000000000000017219155529304346875 FT. PROTECTION AREA (PRA)	—
0.00000000000000000000000000000000000000086095777646804346875 FT. PROTECTION AREA (PRA)	—
0.00000000000000000000000000000000000000043047888823404346875 FT. PROTECTION AREA (PRA)	—
0.00000000000000000000000000000000000000021523944411704346875 FT. PROTECTION AREA (PRA)	—
0.000000000000000000000000000000000000000107619722058517171875 FT. PROTECTION AREA (PRA)	—
0.005380986102925869375 FT. PROTECTION AREA (PRA)	—
0.00269049305146129346875 FT. PROTECTION AREA (PRA)	—
0.001345246525730647171875 FT. PROTECTION AREA (PRA)	—
0.000672623262865323869375 FT. PROTECTION AREA (PRA)	—
0.000336311631432661944346875 FT. PROTECTION AREA (PRA)	—
0.0001681558157166309722171875 FT. PROTECTION AREA (PRA)	—
0.0084077907858314944346875 FT. PROTECTION AREA (PRA)	—
0.004203895392915722171875 FT. PROTECTION AREA (PRA)	—
0.0021019476964578610869375 FT. PROTECTION AREA (PRA)	—
0.0010509738482289304346875 FT. PROTECTION AREA (PRA)	—
0.00052548692411461944346875 FT. PROTECTION AREA (PRA)	—
0.000262743462057309722171875 FT. PROTECTION AREA (PRA)	—
0.00131371731028654869375 FT. PROTECTION AREA (PRA)	—
0.00065685865514327171875 FT. PROTECTION AREA (PRA)	—
0.00032842932757163869375 FT. PROTECTION AREA (PRA)	—
0.00016421466378581944346875 FT. PROTECTION AREA (PRA)	—
0.00821073318929	